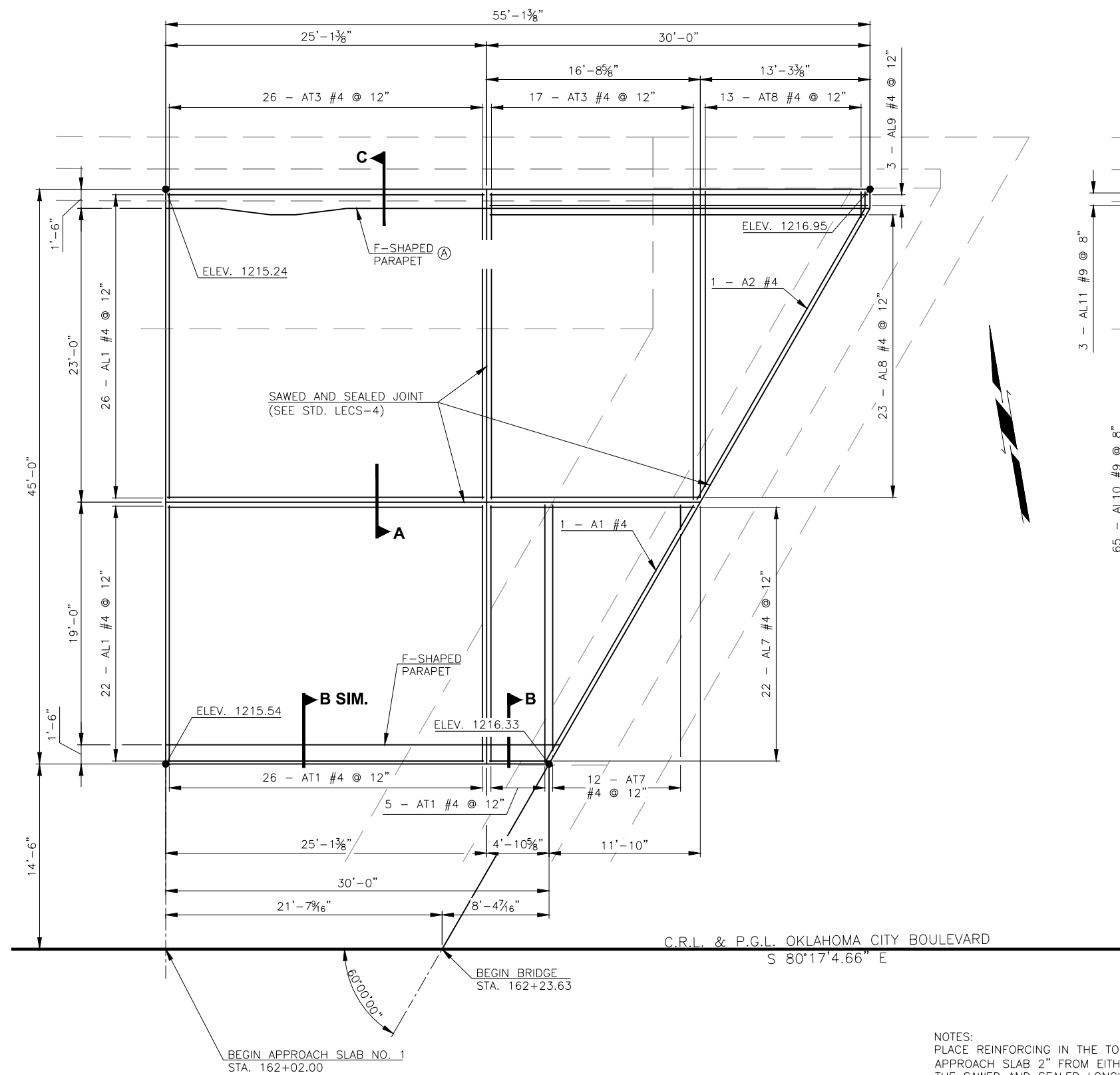
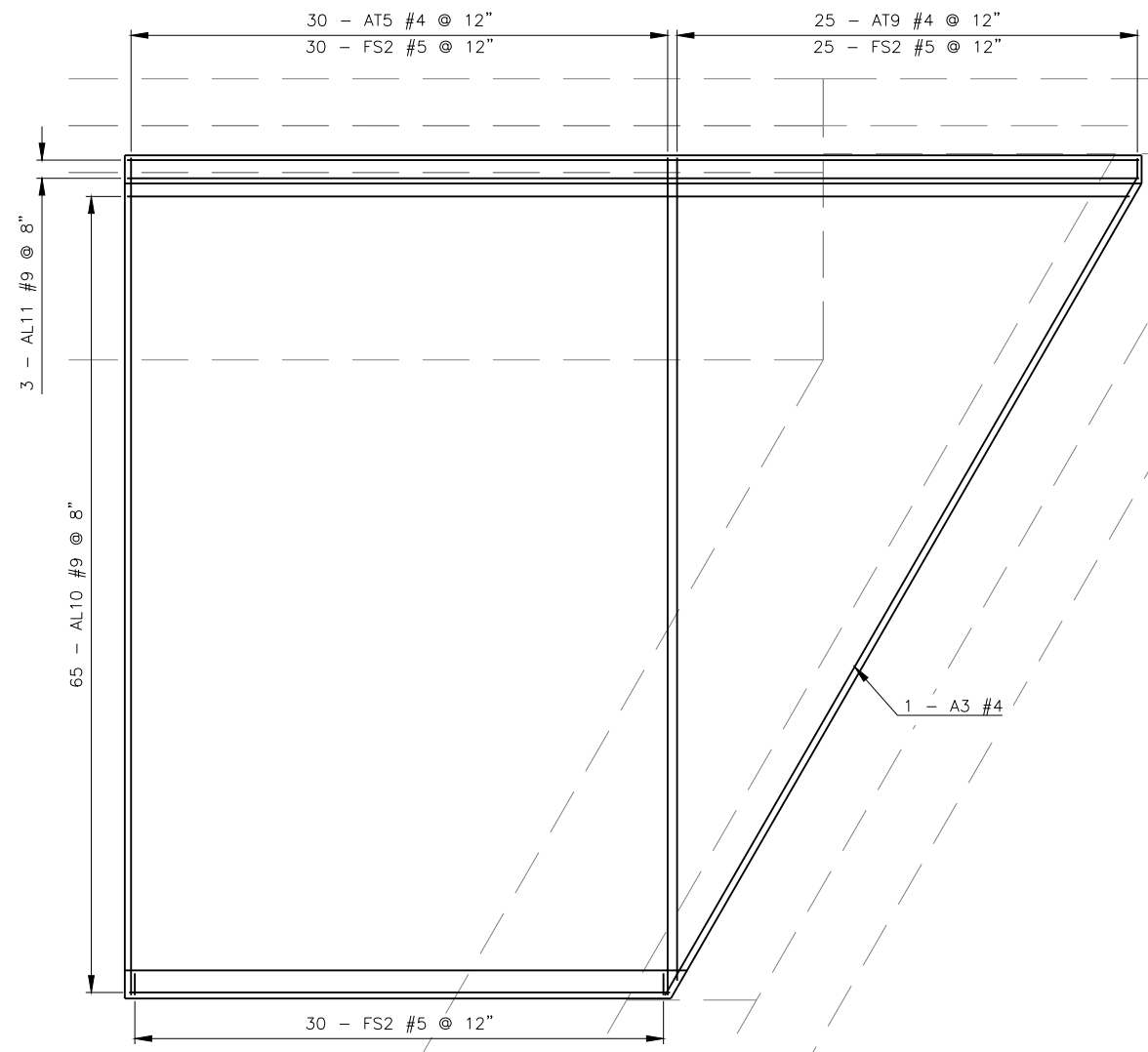


DESCRIPTION	REVISIONS	DATE



TOP REINFORCING MAT DETAIL



BOT. MAT REINFORCING

Ⓐ MODIFY THE STANDARD F-SHAPED PARAPET FOR LIGHT POLE ATTACHMENT. FOR DETAILS, SEE SHEET 104. THE COST FOR ADDITIONAL REINFORCEMENT, CONCRETE, AND CONSTRUCTION OF THE PARAPET MODIFICATION INCLUDING ALL EQUIPMENT, MATERIALS, LABOR, AND INCIDENTALS, SHALL BE INCLUDED IN THE PRICE BID FOR "42" F-SHAPED PARAPET". ALL COST ASSOCIATED WITH ATTACHING THE LIGHT POLE TO THE PARAPETS INCLUDING THE ANCHOR UNIT TO BE CAST INTO THE CONCRETE PARAPET SHALL BE INCLUDED IN OTHER ITEMS OF WORK. REFERENCE LIGHTING PLAN FOR LIGHT POLE LOCATION.

NOTES:
 PLACE REINFORCING IN THE TOP OF THE APPROACH SLAB 2" FROM EITHER SIDE OF THE SAWED AND SEALED LONGITUDINAL JOINT. FOR ADDITION DETAILS OF LONGITUDINAL JOINT, SEE STD. LECS-4.

FOR ADDITIONAL DETAIL OF APPROACH SLAB AT ABUTMENT, SEE SHEETS 94 AND 101.

FOR SECTIONS A, B, AND C. SEE SHEET 122.

C.R.L. & P.G.L. OKLAHOMA CITY BOULEVARD
 S 80°17'4.66" E

BEGIN APPROACH SLAB NO. 1
 STA. 162+02.00

BEGIN BRIDGE
 STA. 162+23.63

DESIGN	T.A.C.	OKLAHOMA CITY BLVD. OVER	OKLAHOMA COUNTY
DRAWN	R.A.P.	CLASSEN BLVD.	BRIDGE B
CHECKED	T.A.C.	APPROACH SLAB NO. 1 PLAN	
APPROV.	T.A.C.		
SQUAD	CEC		
		JOB PIECE NO. 17428(88) SHEET NO. 120	